

# ÜBERSICHTSZEICHNUNG

ASSEMBLY DRAWING

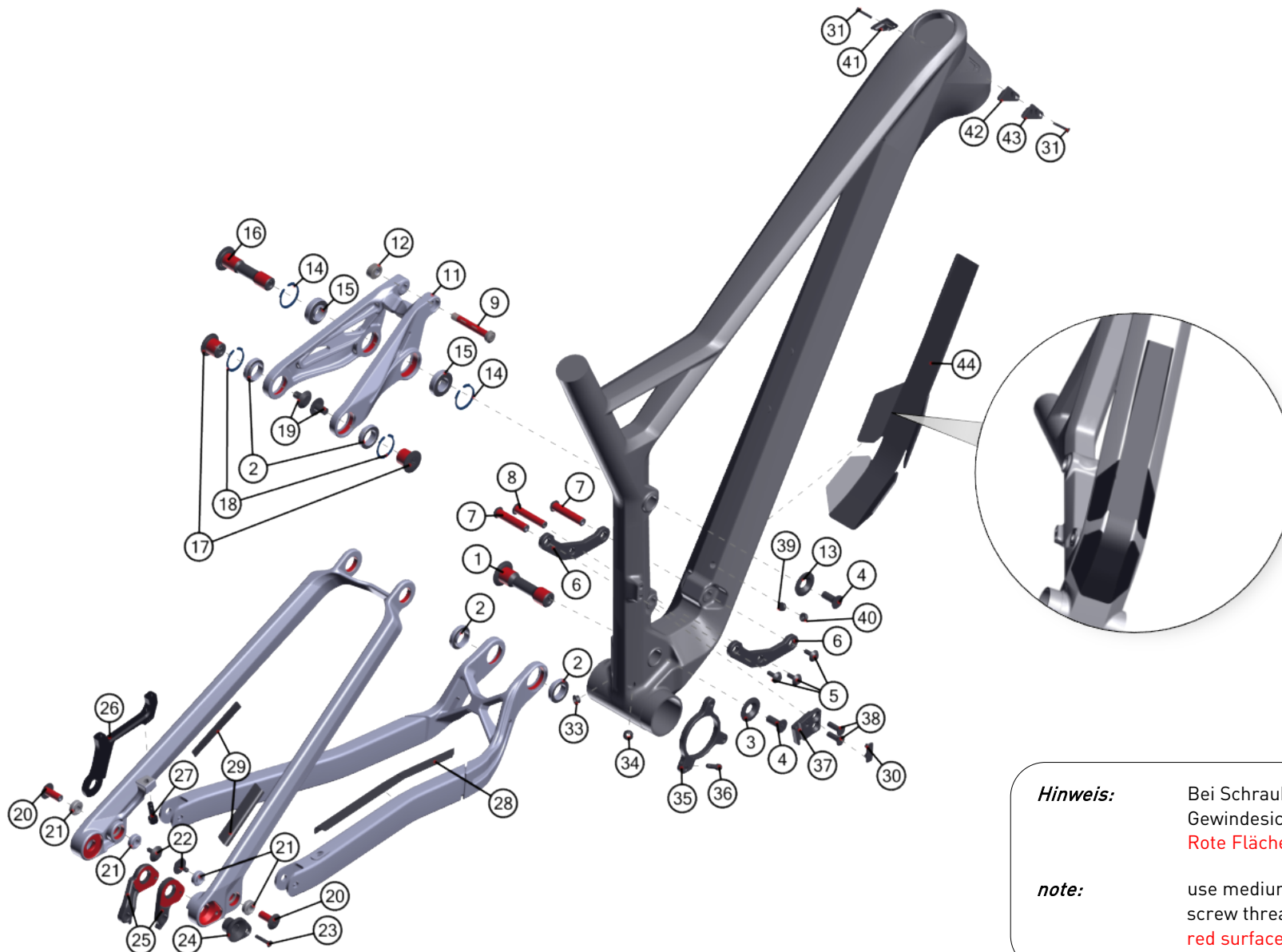
**GHOST**



SLAMR 9.9, 6.9 LC MY20

2019-07-23

V01



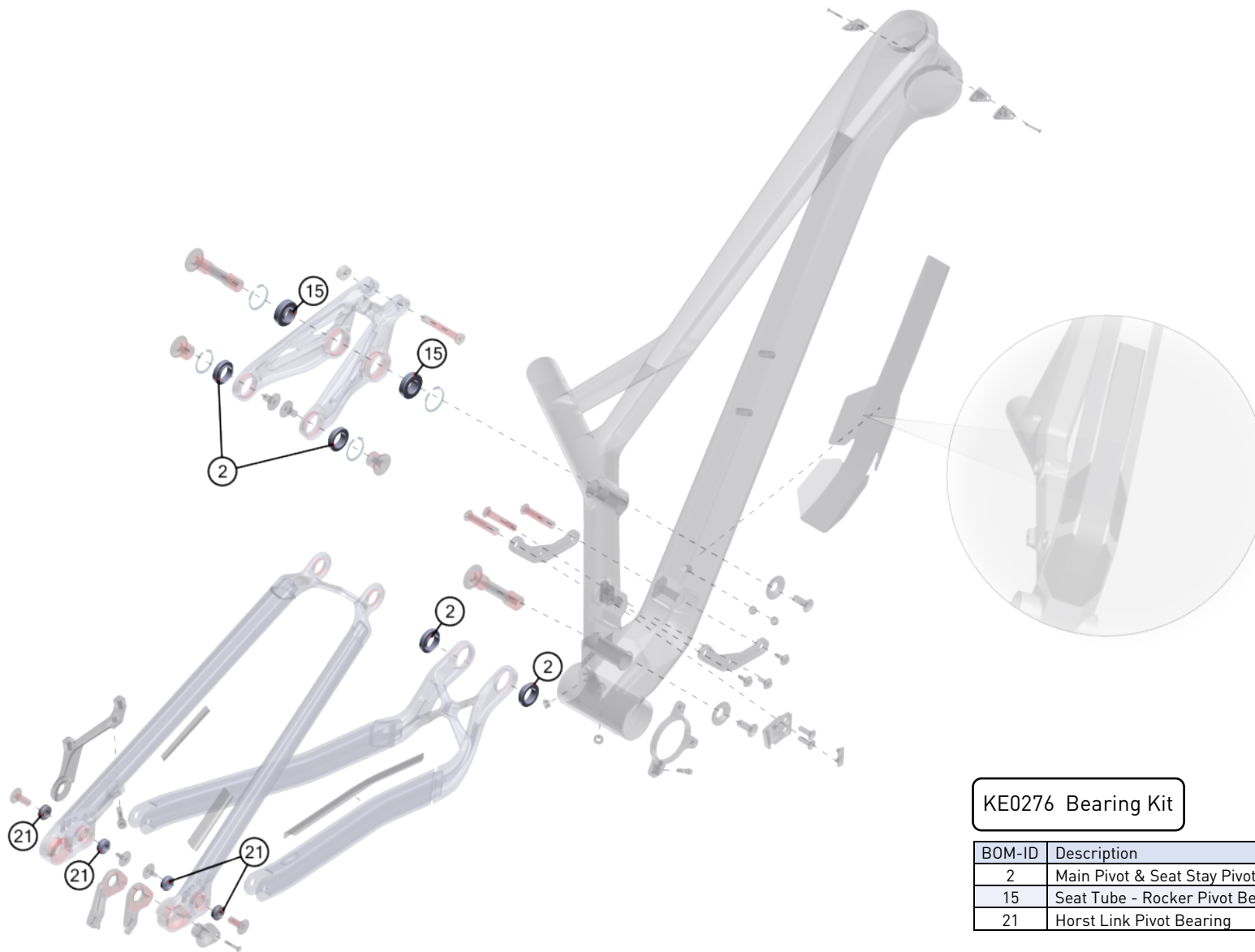
**Hinweis:** Bei Schrauben muß mittelfeste Gewindesicherung verwendet werden.  
**Rote Flächen müssen gefettet werden.**

**note:** use medium strength screwlock for screw threads.  
**red surfaces has to be greased.**

*optional*

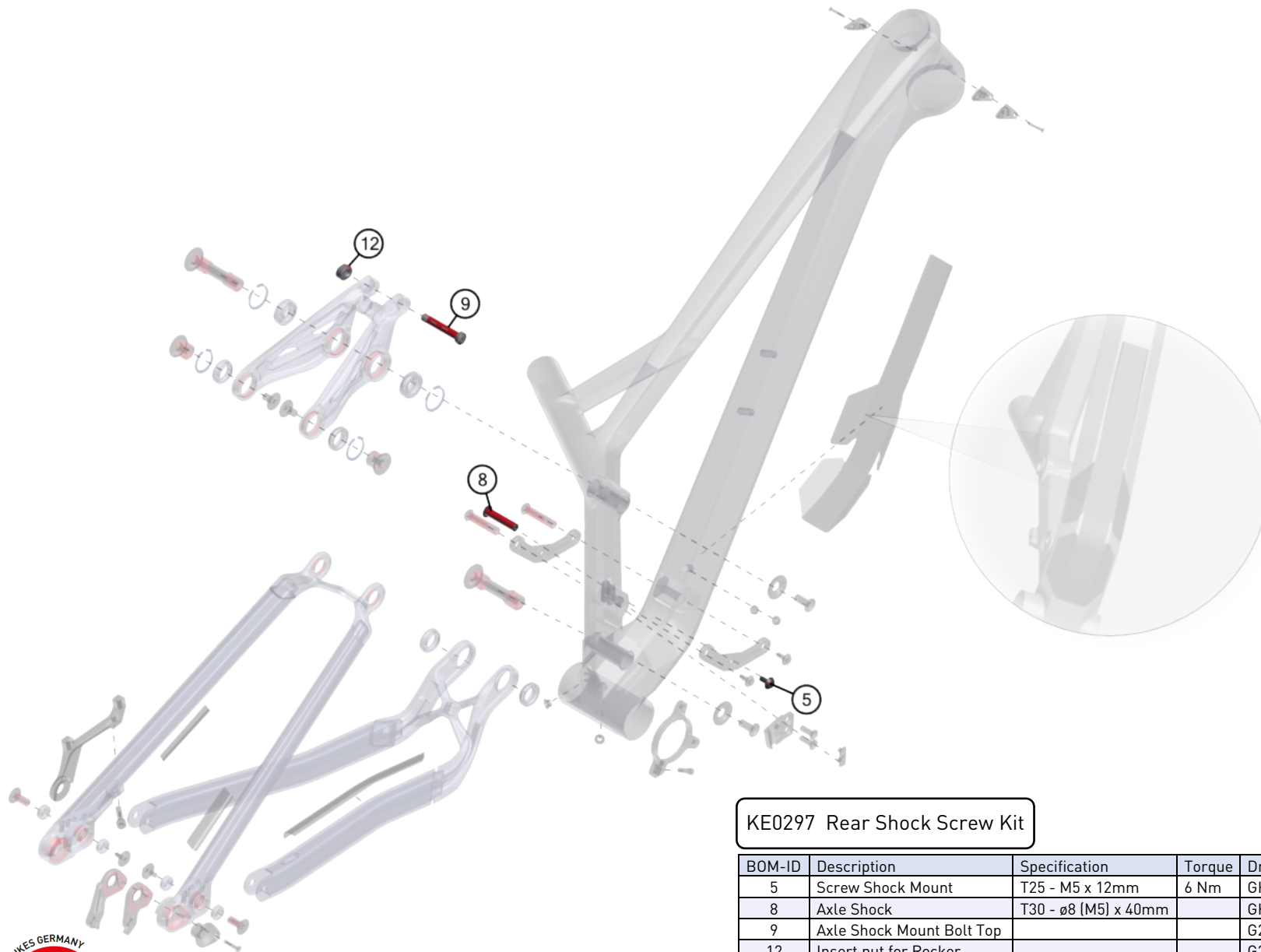


BOM-ID	Description	Specification	Torque	Drawing no. supplier	Item no.	QTY
1	Axel Main Pivot	T50 - ø17 [M8]	8 Nm	GHO-AMR16AX-AMP	SM1364	1
2	Seat Stay & Main Pivot bearing			6803V2RS/8	SM1379	4
3	Cap Nut Main Pivot			GHO-AMR16NP-NMP	SM1370	1
4	Flat Head Screw M8	T30 - M8 x 20mm	8 Nm or 12 Nm	GHO-AMR16SC-PM820	SM1375	2
5	Screw Shock Mount	T25 - M5 x 12mm	6 Nm	GHO-AMR16SC-NSM512	SM1377	3
6	Shock Mount			GHO-AMR6N117-B02	FR0T0019	2
7	Axle Shock Mount			GHO-AMR6N117AX-ASM	FRAX0001	2
8	Axle Shock	T30 - ø8 [M5] x 40mm		GHO-AMR16AX-ASP	EZ2255	1
9	Axle Shock Mount Bolt Top			G27M-F13AM-04-04-040	FRAX0005	1
11	Rocker one piece			G27M-F13AM_04-02-300	FR0T0023	1
12	Insert nut for Rocker			G27M-F13AM-04-04-080	FRNT0004	1
13	Cap Rocker Fix Pivot			G27M-F13AM-04-04-050	FR0T0020	1
14	Circlip RFP	28mm DIN 472		IRTW-ø28	FRWS0028	2
15	Seat Tube - Rocker Pivot Bearing			6902V2RS/10	SM1380	2
16	Axle Rocker Fix Pivot	T50 - ø15 [M8] x 62,5mm	12 Nm	G27M-F13AM-04-04-041	FRAX0006	1
17	Axle Seat Stay Pivot	T50 - ø17 [M8] x 13,5mm	8 Nm	G27M-F13AM-04-04-042	FRAX0007	2
18	Circlip SSP	26mm		IRTW-ø26	FRWS0026	2
19	Screw SS Yoke	T30 - M8 x 13mm	8 Nm	GHO-AMR16SC-NSM813	SM1378	2
20	Axle Horst Link	T30 - ø8 [M5] x 18,9mm	6 Nm	GHO-AMR16AX-AHL	SM1363	2
21	Horst Link Pivot Bearing			688B1+B1-VRS	SM1381	4
22	Screw CS&DO	T25 - M5 x 11mm	6 Nm	GHO-AMR16SC-NSM511	SM1376	2
23	Flat Head Screw M4	T15 - M4 x 20mm	0,8 Nm	GHT12-062	FRSC0061	1
24	Hanger Mount			GHT12-061	FRNT0061	1
25	Shimano Hanger [A1]			GHT12-058	FRHG0058	1
25	SRAM Hanger [A2]			GHT12-057	FRHG0057	1
26	Disc Brake Mount			G27M-F13AM18-DBM	FR0T0013	1
27	Post Mount Screw	T30 - M6 x 26mm	8 Nm	GHO-AMR16SC-SM626	SM1372	1
28	C/S protector			G27M-F13AM18-CSP	SR0617	1
29	S/S Protector			GHT14-009	SM1392	2
30	FD cap			GHM09-015	SM1396	1
31	Flat Head Screw M3	T10 - M3 x 10 mm	0,5 Nm	GHT-12-038	SM1524	2
33	BB cap BR			GHT14-002	SM1390	1
34	BB cap RD			GHT14-001	SM1389	1
35	ISCG Adapter			GHO-AMR16-B03	SM1395	1
36	Screw ISCG			GHO-AMR16SC-SM517	SM1393	1
37	FD Direct Mount			GHO-AMR16-B02	SM1383	1
38	Flat Head Screw	T30 - M6 x 12mm	6 Nm	GHO-AMR16SC-PM612	SM1374	2
39	DT cap closed			GHM-09-019	SM1397	1
40	DT cap Sideswing FD			GHM-09-016	SM1388	1
41	HT cap left; RB & RD			GHT12-005	SM1401	1
42	HT cap right; 1 hole; Dropper			GHT12-007	SM1399	1
43	HT cap right; 2 hole; Dropper + FD			GHT12-006	SM1402	1
44	DT Protector			GHT15-002	SR0056	1



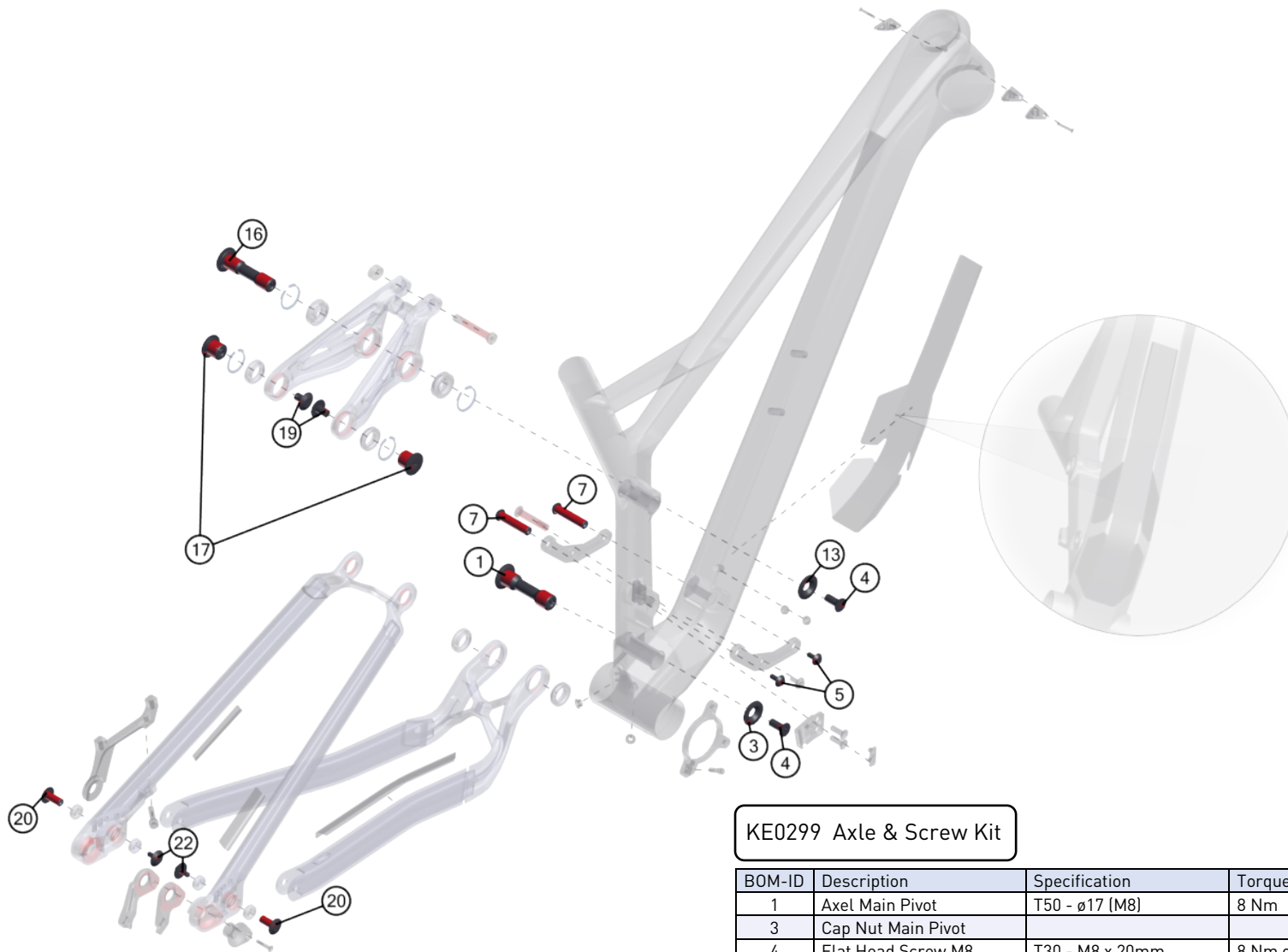
KE0276 Bearing Kit

BOM-ID	Description	Drawing no. supplier	Item no.	QTY
2	Main Pivot & Seat Stay Pivot	6803V2RS/8	SM1379	4
15	Seat Tube - Rocker Pivot Bearing	6902V2RS/10	SM1380	2
21	Horst Link Pivot Bearing	688B1+B1-VRS	SM1381	4



KE0297 Rear Shock Screw Kit

BOM-ID	Description	Specification	Torque	Drawing no. supplier	Item no.	QTY
5	Screw Shock Mount	T25 - M5 x 12mm	6 Nm	GHO-AMR16SC-NSM512	SM1377	1
8	Axle Shock	T30 - ø8 (M5) x 40mm		GHO-AMR16AX-ASP	EZ2255	1
9	Axle Shock Mount Bolt Top			G27M-F13AM-04-04-040	FRAX0005	1
12	Insert nut for Rocker			G27M-F13AM-04-04-080	FRNT0004	1



KE0299 Axle & Screw Kit

BOM-ID	Description	Specification	Torque	Drawing no. supplier	Item no.	QTY
1	Axel Main Pivot	T50 - ø17 (M8)	8 Nm	GHO-AMR16AX-AMP	FRAX0002	1
3	Cap Nut Main Pivot			GHO-AMR16NP-NMP	SM1370	1
4	Flat Head Screw M8	T30 - M8 x 20mm	8 Nm or 12 Nm	GHO-AMR16SC-PM820	SM1375	2
5	Screw Shock Mount	T25 - M5 x 12mm	6 Nm	GHO-AMR16SC-NSM512	SM1377	2
7	Axle Shock Mount			GHO-AMR16AX-ASP	FRAX0001	2
13	Cap Rocker Fix Pivot			G27M-F13AM-04-04-050	FROT0020	1
16	Axle Rocker Fix Pivot	T50 - ø15 (M8) x 62,5mm	12 Nm	G27M-F13AM-04-04-041	FRAX0006	1
17	Axle Seat Stay Pivot	T50 - ø17 (M8) x 13,5mm	8 Nm	G27M-F13AM-04-04-042	FRAX0007	2
19	Screw SS Yoke	T30 - M8 x 13mm	8 Nm	GHO-AMR16SC-NSM813	SM1378	2
20	Axle Horst Link	T30 - ø8 (M5) x 18,9mm	6 Nm	GHO-AMR16AX-AHL	SM1363	2
22	Screw CS&DO	T25 - M5 x 11mm	6 Nm	GHO-AMR16SC-NSM511	SM1376	2